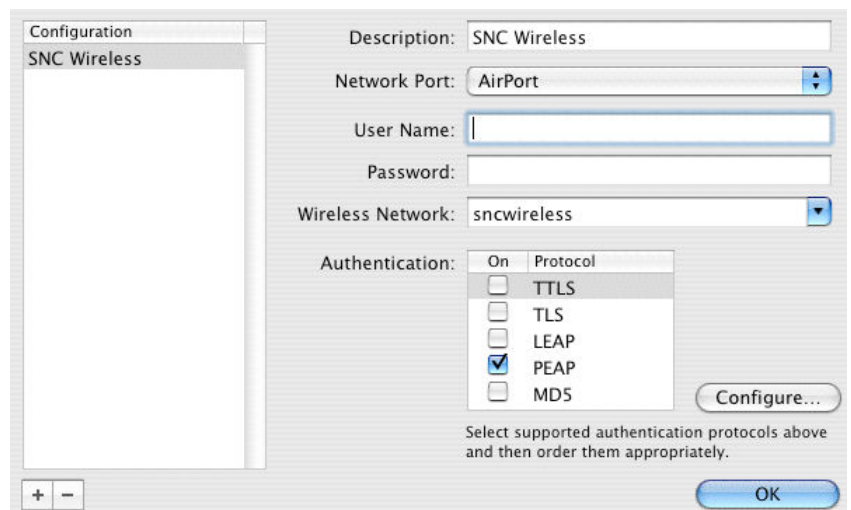
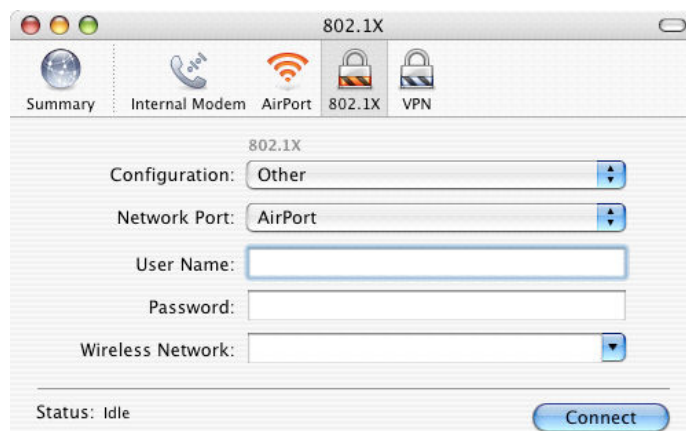


Setting up an SNC Wireless Connection

Macintosh OS 10.3 – 10.4

To configure the SNC wireless network:

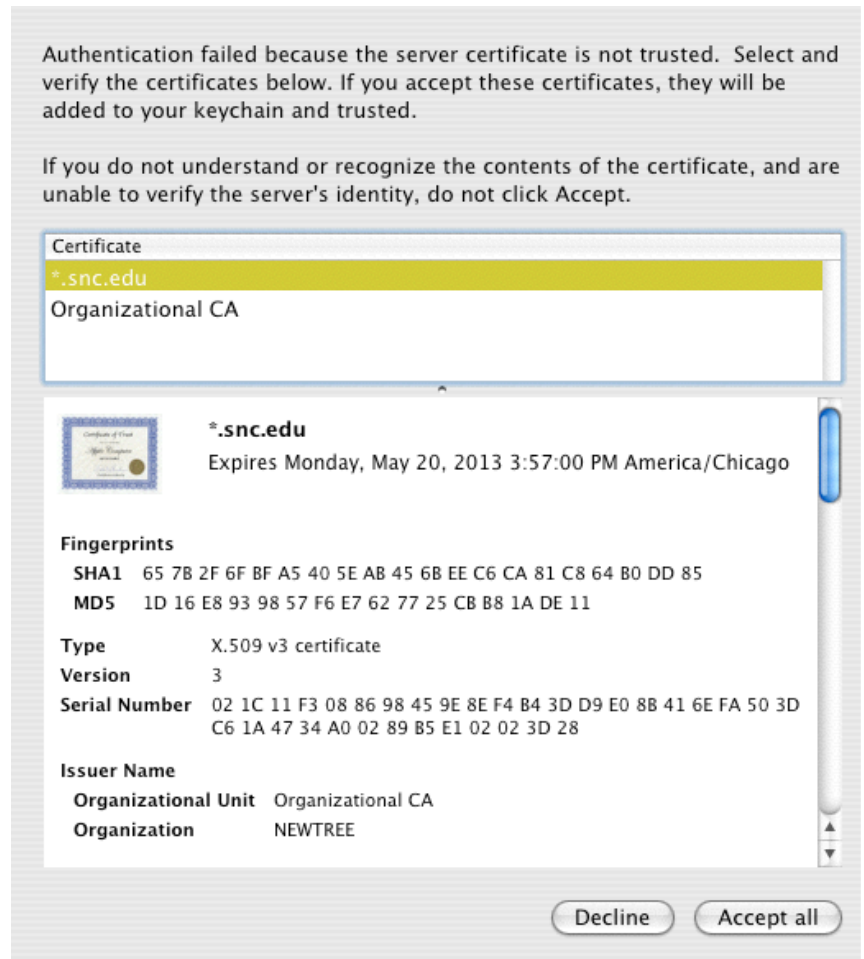
1. From the Apple menu, open your Applications folder, then choose Internet Connect. You will see the AirPort window, pictured below.
2. From the File menu, choose New 802.1x Connection. You will then see the 802.1X window, pictured below.
3. From the Configuration drop-down menu, choose Edit Configurations. That window should be set up to look like the picture below. The Description can be anything you wish, to identify this wireless network. If you are within range of the sncwireless network, you will be able to choose "sncwireless" from the Wireless Network menu. Uncheck all of the boxes except PEAP. Leave the User Name and Password boxes blank. Click OK.



4. You should be prompted to log in with your User Name and Password. Enter your SNC login ID and password, and click Connect.

Note: If you cannot connect to the SNC wireless network at this point, please try resetting your password via the web interface at <http://www.snc.edu/pw>.

5. You will then be prompted to accept a server certificate. Click **Accept All**. You should only see this the first time you log in to the sncwireless network.



6. The SNC wireless network setup is now complete. Next, you will need to go through the registration process on the SNC network.
7. When you open your web browser, you should see the “Welcome to St. Norbert College!” page, which provides instructions for the registration process. If you do not automatically see that page, go to <http://netreg.snc.edu>. Even if you have already registered your computer on the SNC network, you will have to register again on the wireless network because you are using a different network card.

Assistance and Questions

If you have any questions or need more information, please call the Help Desk at (920) 403-HELP (4357), contact us via e-mail at helpdesk@snc.edu, or stop by the Help Desk in Cofrin 101. The Help Desk is for St. Norbert College students and employees only.