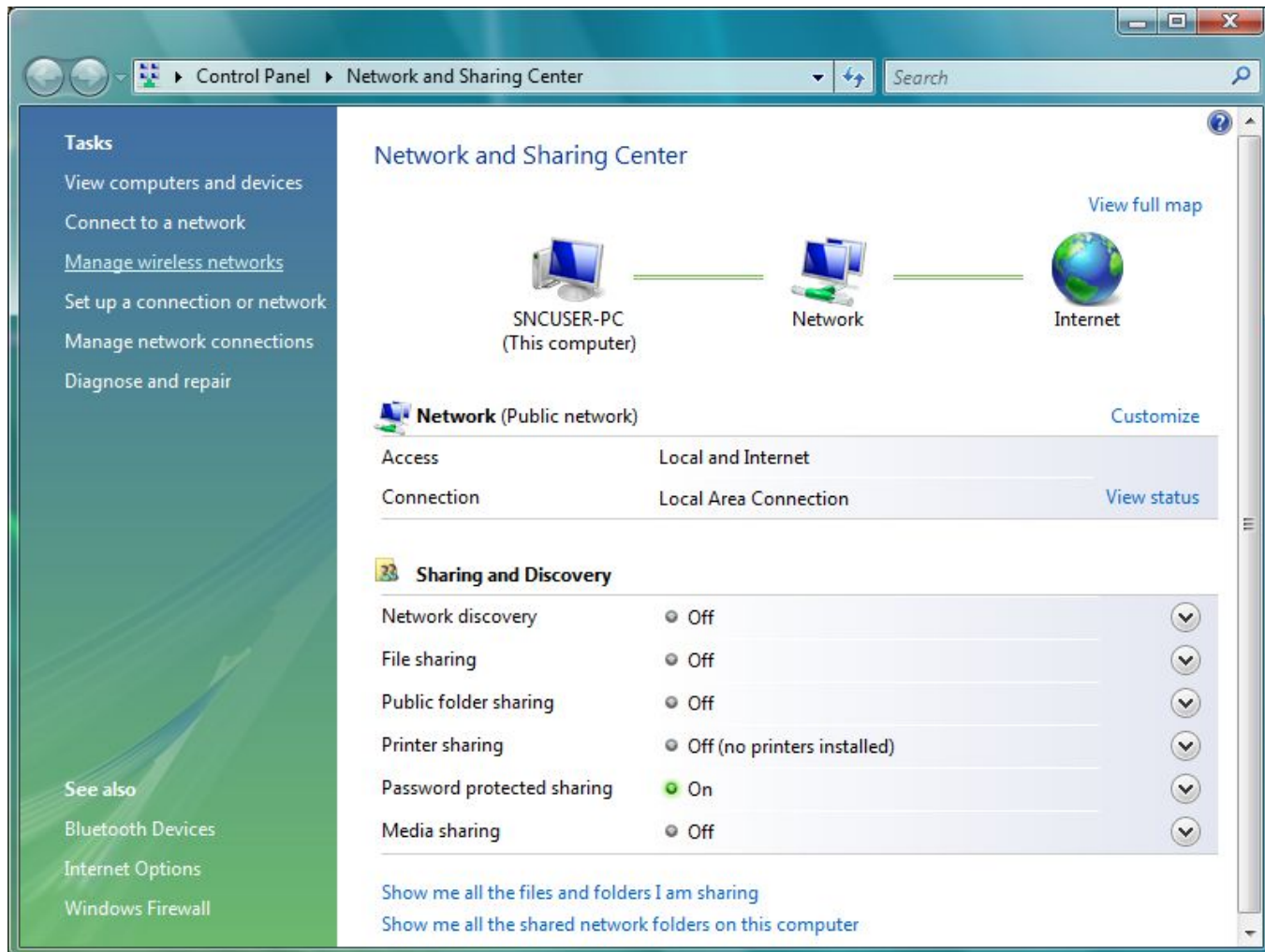
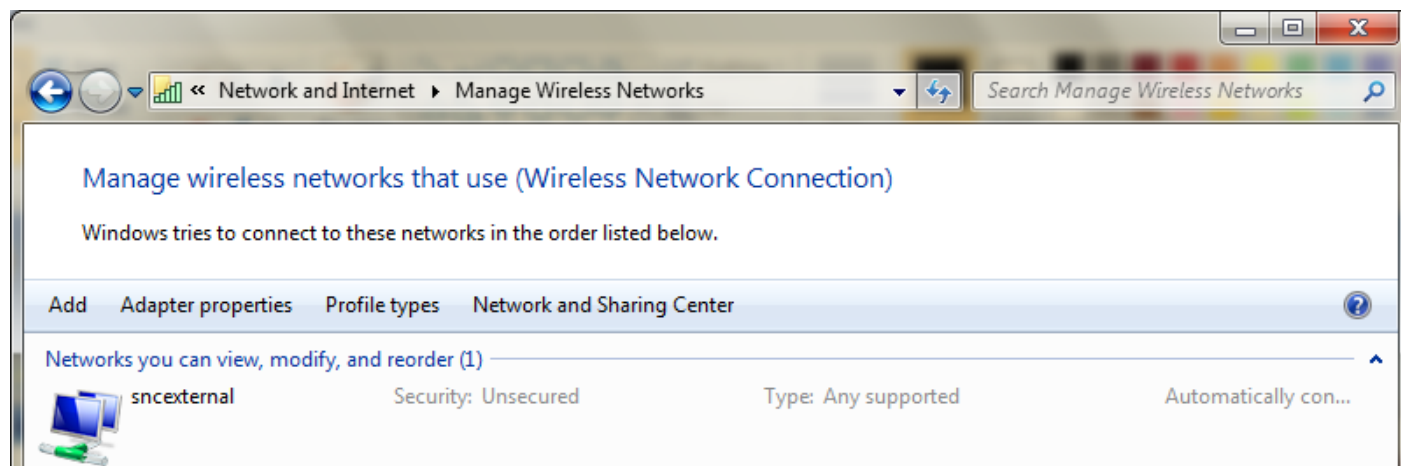


# Setting up an SNC Wireless Connection: Windows 7

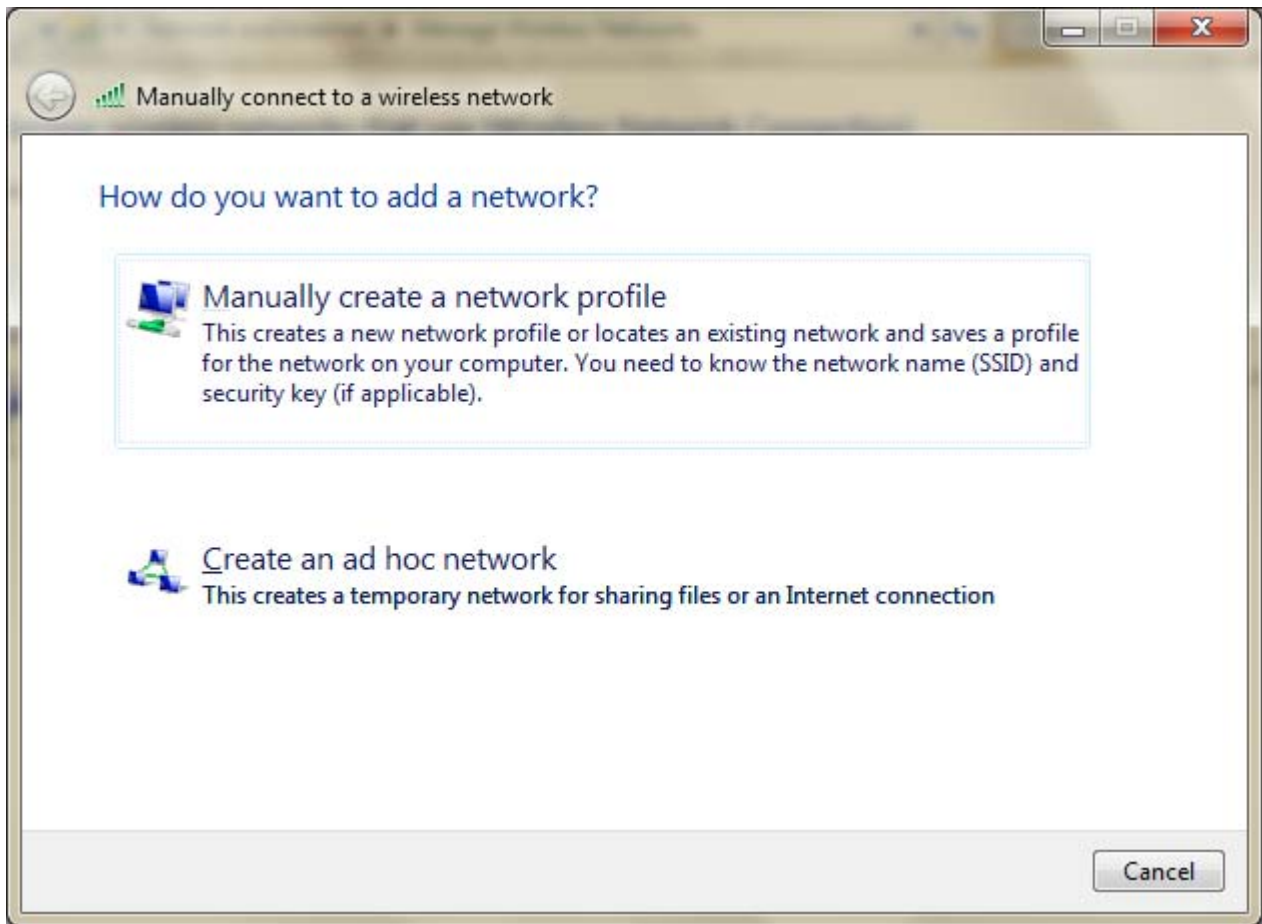
1. Go to Start ► Control Panel ► Network and Internet ► Network and Sharing Center. You will see the Network and Sharing Center window shown below.



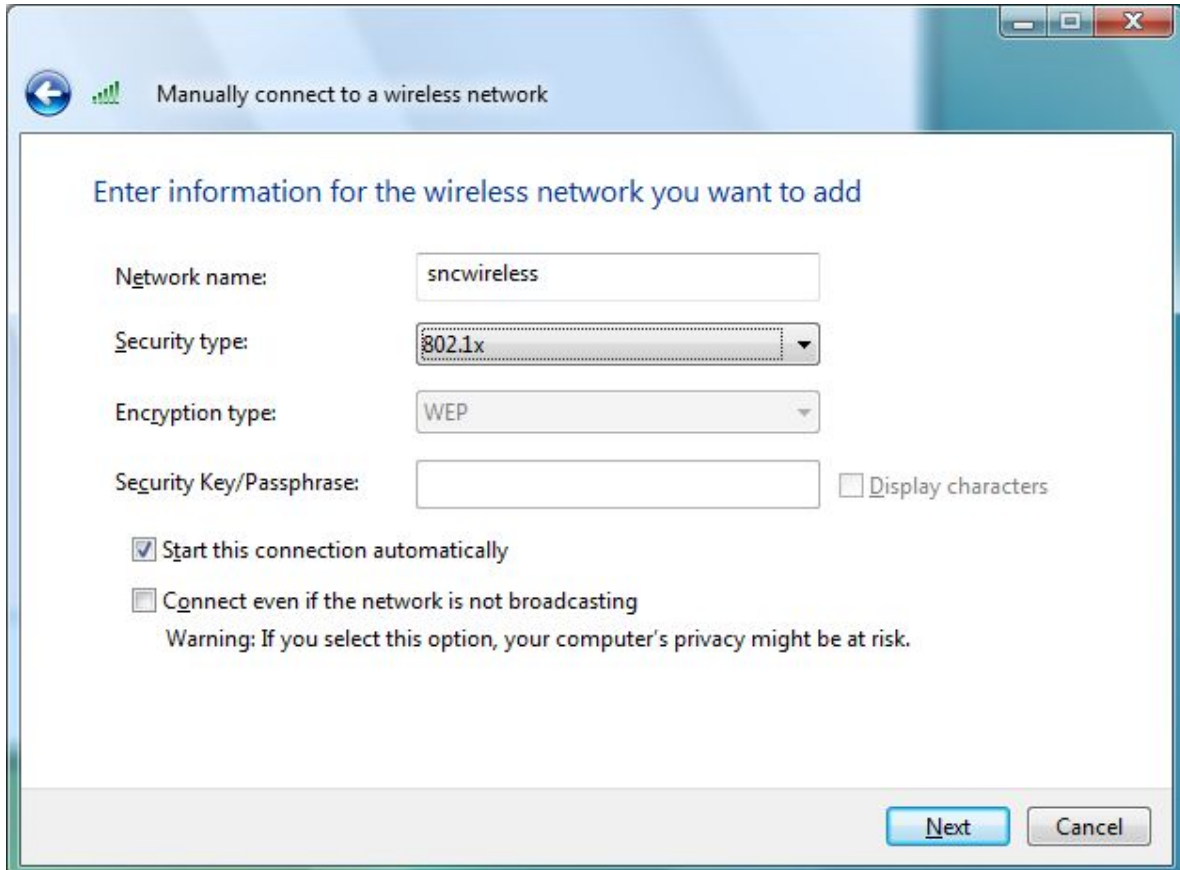
2. On the left side, click on "Manage wireless networks." You will see the Manage wireless networks window shown below.



3. Click Add. You will see the How do you want to add a network? window shown on the next page.

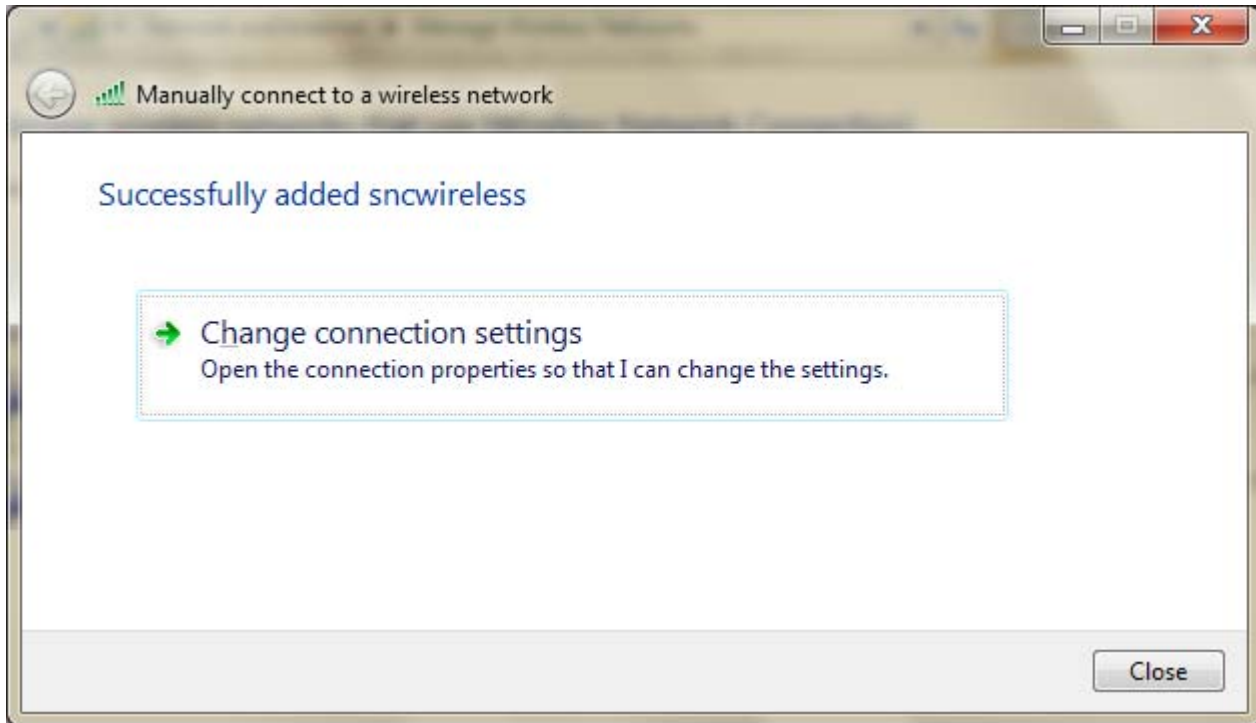


4. Click on Manually create a network profile. You will see the window shown below.

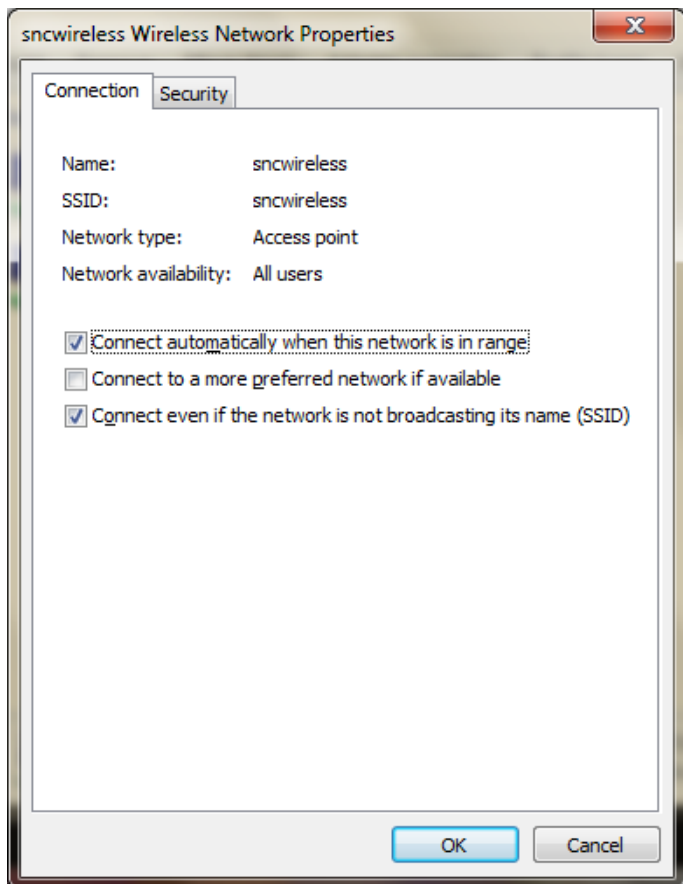


5. Fill in the information exactly as shown in the picture above. The network name is **sncwireless**.

6. Click Next. You will see the window shown below.

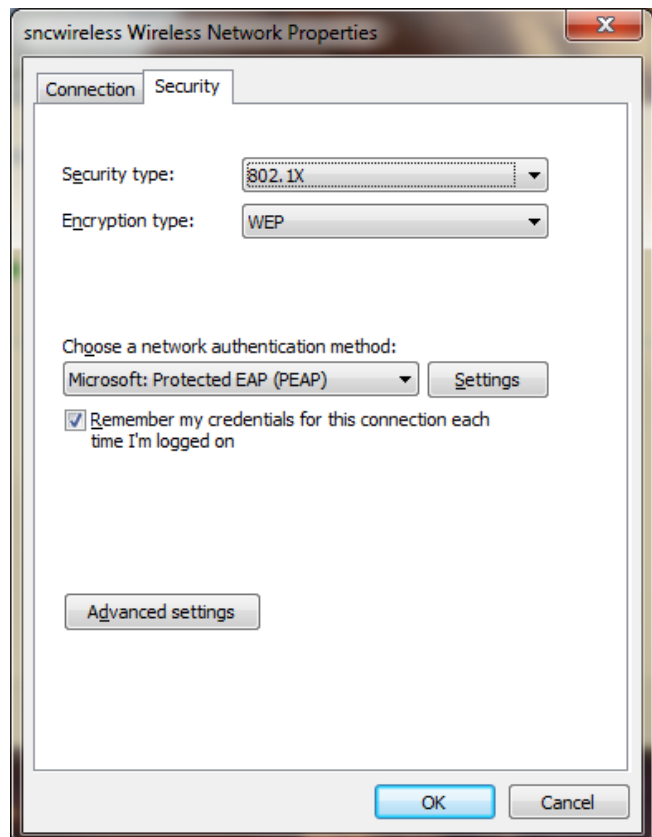


7. Click on Change connection settings. You will see the window shown below (left).



8. On the Connection tab, check or uncheck the boxes as shown in the picture above.

9. Click on the Security tab.



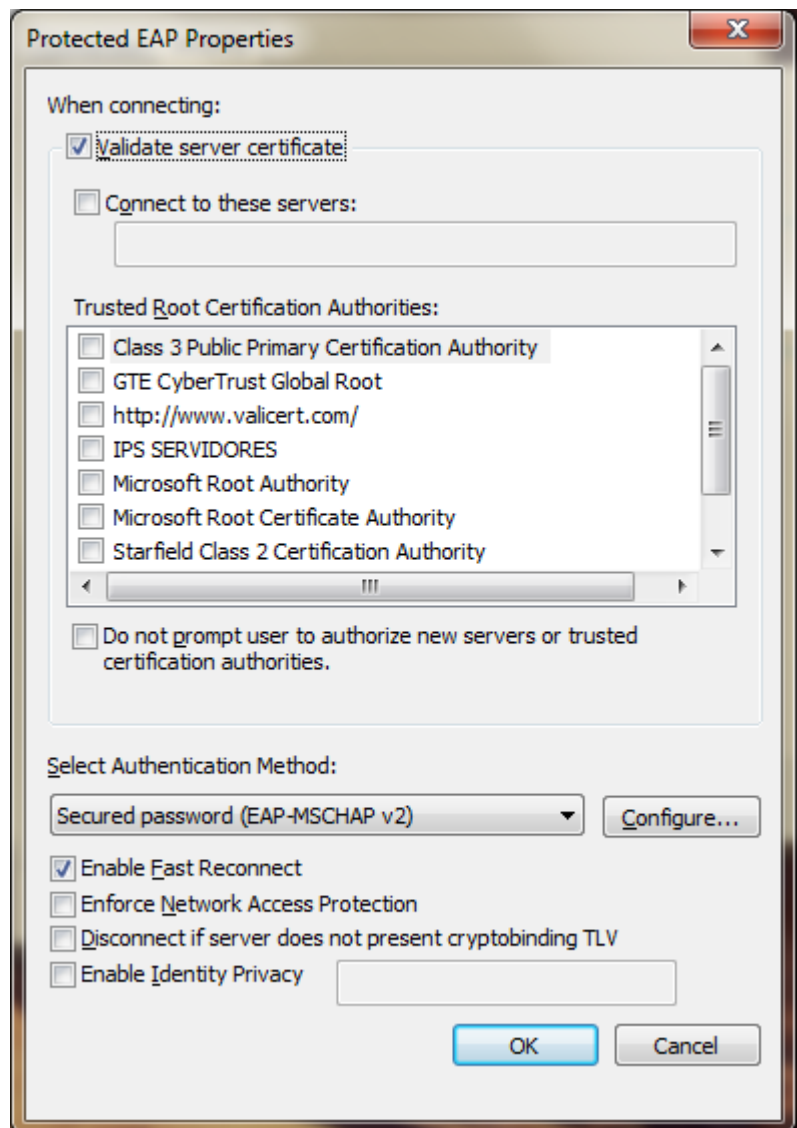
10. On the Security tab, choose the options shown in the picture above. Do **not** click OK.

11. Click the Settings button. You will see the window shown on the next page.

12. Check or uncheck the boxes as shown in the picture at right.

Do **not** click OK yet.

13. Click the Configure button. You will see the small pop-up window shown below.



14. In the pop-up window (shown at right), uncheck the box and click OK.

15. Click OK or Close to close all of the open dialog boxes.

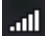


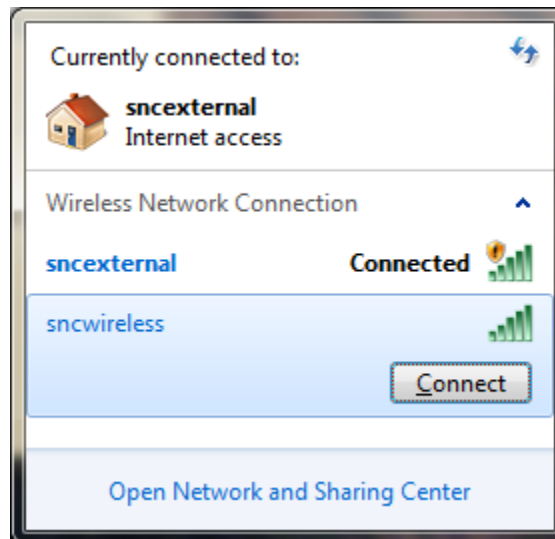
16. Go to Start ► All Programs ► Accessories. Right-click on Command Prompt and choose Run as administrator. If you get a “Do you want to allow...” box, click Yes.

17. At the prompt, type **netsh interface teredo set state disable** and press Enter. It should say “Ok.”

18. At the prompt, type **netsh interface isatap set state disable** and press Enter. It should say “Ok.”

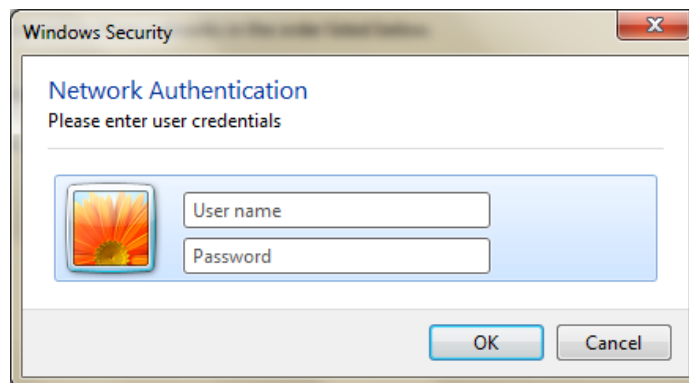
19. Close the Command Prompt window.

20. In the system tray (by the clock), click  on the wireless icon.
21. In the windows that pops up, shown at right, click once on sncwireless, then click the Connect button. Wait while it connects (it may take a minute or two).



22. When the Network Authentication box (shown at right) appears, enter your 6-character SNC network login ID and password.
23. Click OK.

**Note:** If you cannot connect to the SNC wireless network at this point, please try resetting your password via the web interface at <http://www.snc.edu/pw>.



24. The SNC wireless network setup is now complete. If you haven't already, you will need to register your wireless connection on the SNC network. Even if you have already registered your computer on the SNC network while it was plugged in to a network jack or hub, you will need to register again on the wireless network because your computer uses a different network card for your wireless connection.
25. When you open your web browser, you should see the St. Norbert College Network Registration page, which provides instructions for the registration process. If you do not automatically see that page, go to <http://netreg.snc.edu>.
26. Click on "Begin the Registration process now" and proceed as instructed.

## Assistance and questions

If you have any questions or need more information, please call the Help Desk at (920) 403-HELP (4357), contact us via e-mail at [helpdesk@snc.edu](mailto:helpdesk@snc.edu), or stop by the Help Desk in JMS 222.