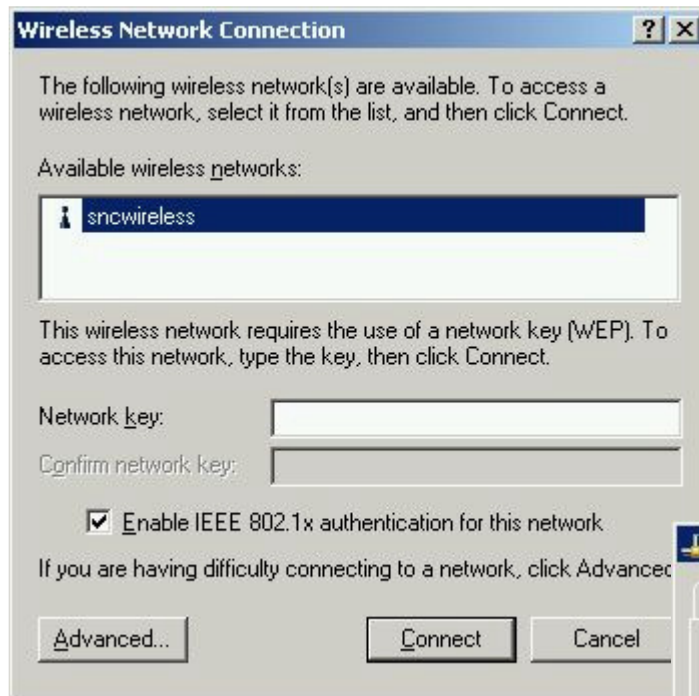
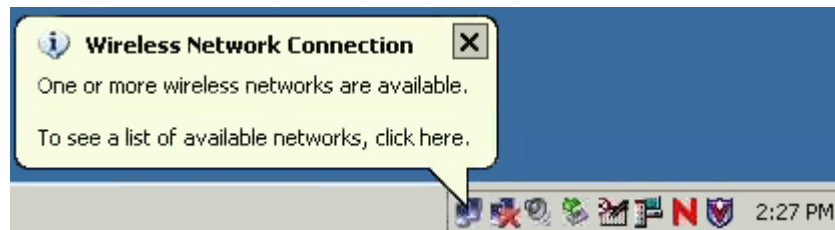


Setting up an SNC Wireless Connection Windows XP Service Pack 1 (SP1)

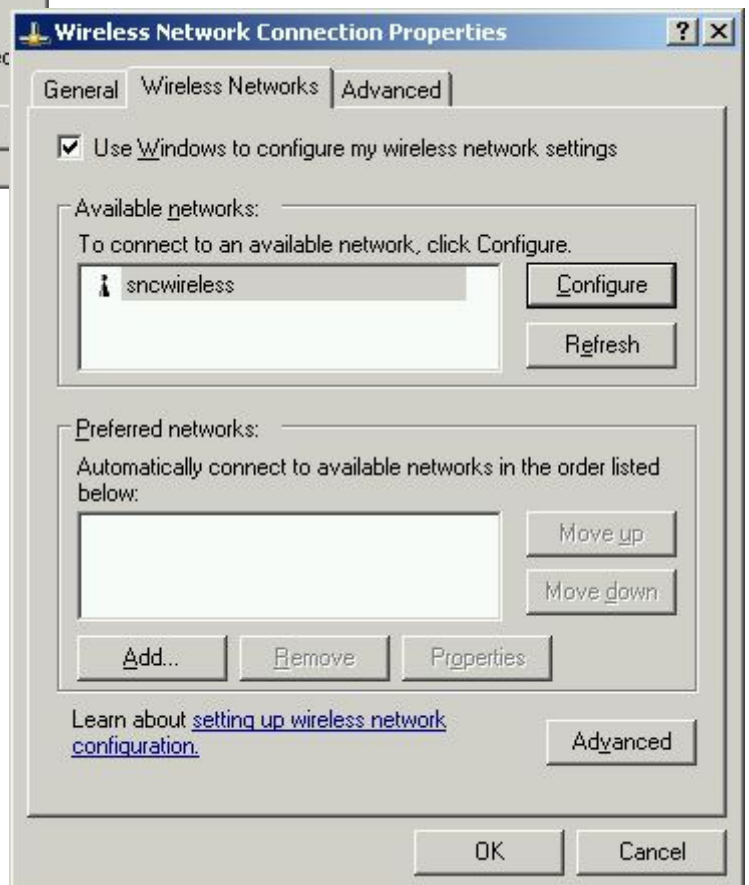
To configure the SNC wireless network:

1. When you are within range of a wireless access point, you will be notified with a pop-up notification like the one shown here. Click on that notification.

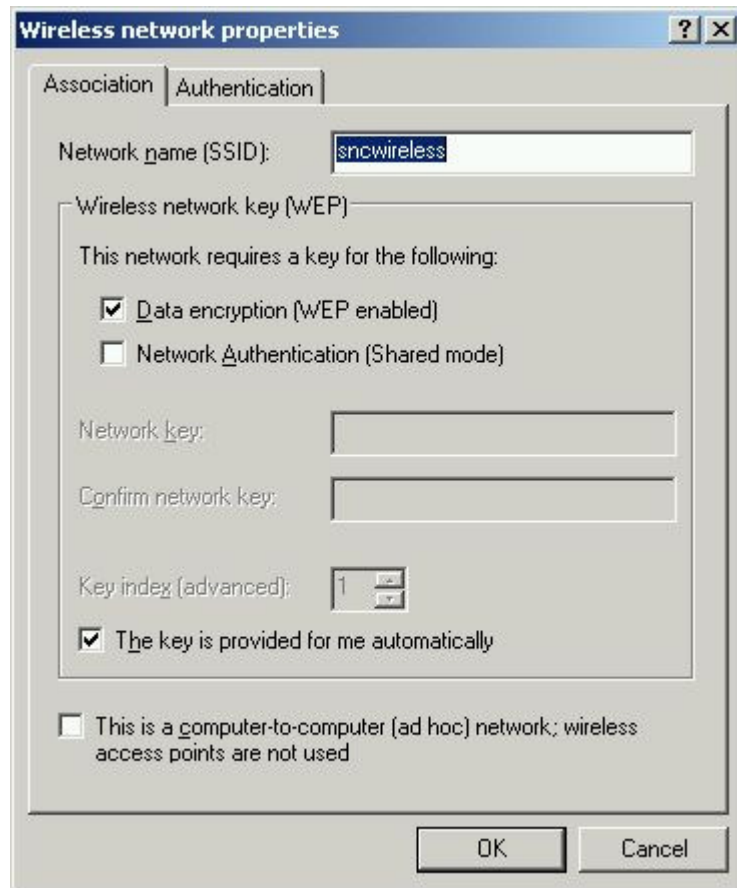


2. You will see the Wireless Network Connection dialog box listing the sncwireless network.
3. Highlight sncwireless, check the “Enable IEEE 802.1x authentication for this network” box, and click the Advanced button.

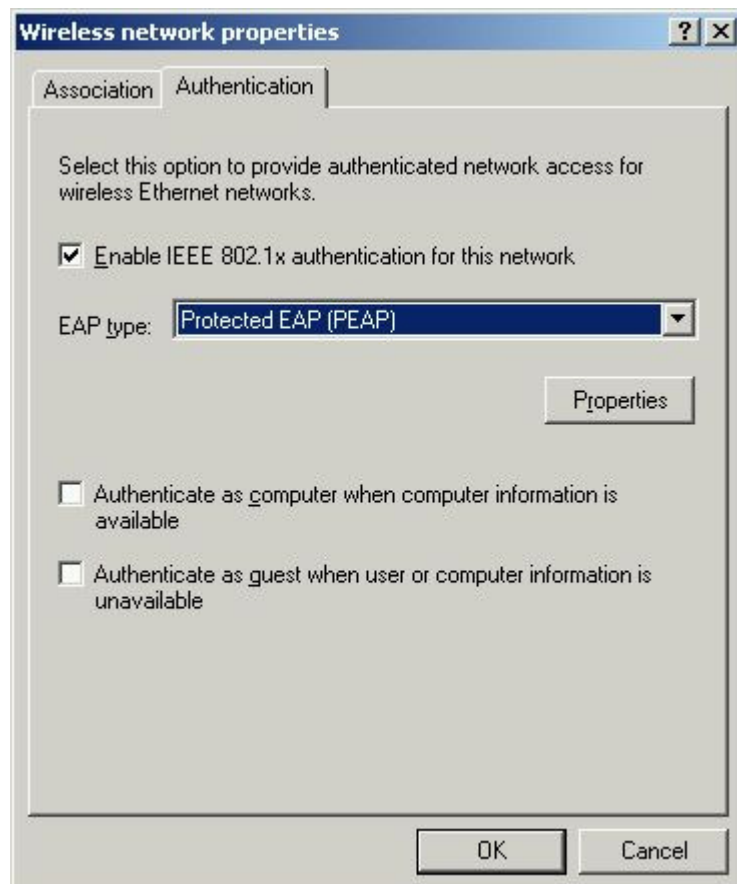
4. On the Wireless Networks tab, check the “Use Windows to configure my wireless network settings” box. Select the sncwireless network, then click the Configure button.



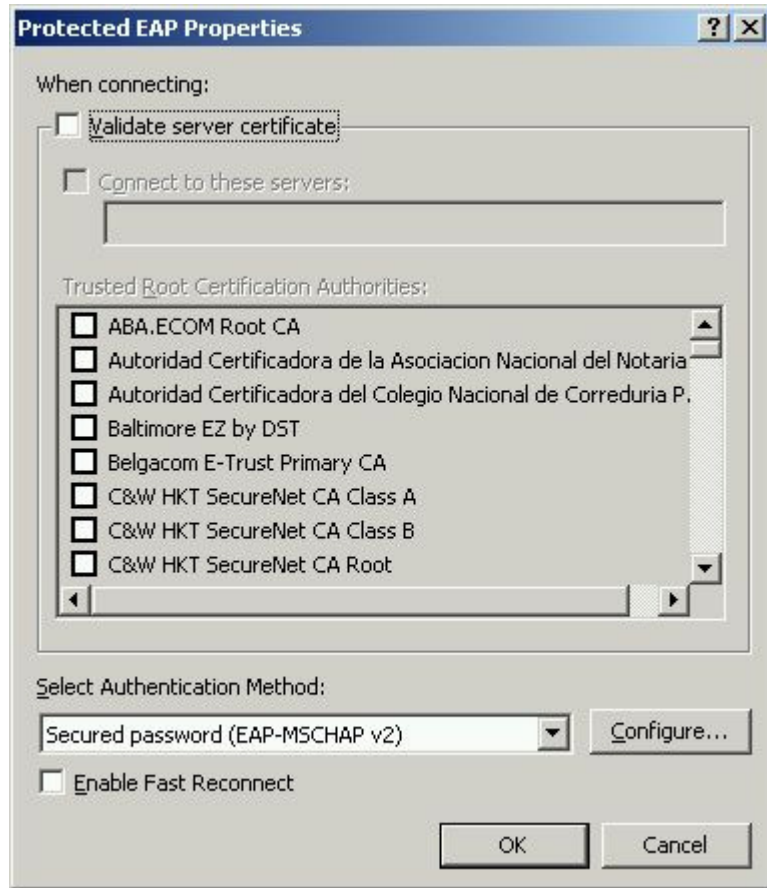
5. On the Association tab, leave the Network name (SSID) set to snwireless. Check the “Data encryption (WEP enabled)” and the “The key is provided for me automatically” boxes. The other boxes should not be checked. Do **not** click OK yet.



6. Switch to the Authentication tab. Check the “Enable IEEE 802.1x authentication for this network” box, and choose “Protected EAP (PEAP)” from the drop-down list. The other boxes should not be checked. Click on the Properties button.



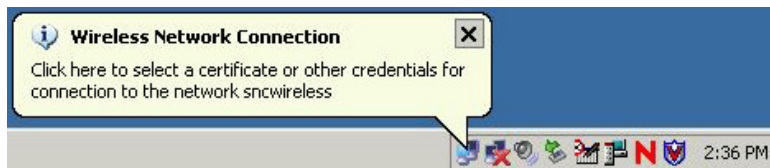
- The “Validate server certificate” box should not be checked. At the bottom, under Select Authentication Method, choose “Secured password (EAP-MSCHAP v2),” then click the Configure button.



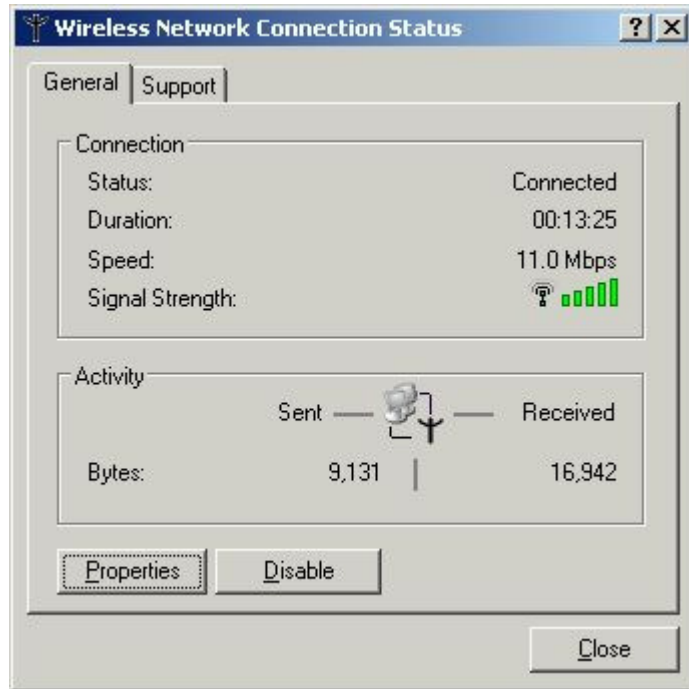
- Uncheck the box and click OK.



- Click OK to close each of the 3 open dialog boxes (Protected EAP Properties, Wireless Network Properties, and Wireless Network Connection Properties).
- You will see another Wireless Network Connection pop-up notification by the clock. Click on it.



11. You will see the Wireless Network Connection Status dialog box. Click the Close button.



12. In the Enter Credentials box, enter your SNC login ID and password. Leave the Logon domain box blank. Click OK.

Note: If you cannot connect to the SNC wireless network at this point, please try resetting your password via the web interface at <http://www.snc.edu/pw>.



13. The SNC wireless network setup is now complete. Next, you will need to go through the registration process on the SNC network.
14. When you open your web browser, you should see the “Welcome to St. Norbert College!” page, which provides instructions for the registration process. If you do not automatically see that page, go to <http://netreg.snc.edu>. Even if you have already registered your computer on the SNC network, you will have to register again on the wireless network because you are using a different network card.

Assistance and Questions

If you have any questions or need more information, please call the Help Desk at (920) 403-HELP (4357), contact us via e-mail at helpdesk@snc.edu, or stop by the Help Desk in Cofrin 101. The Help Desk is for St. Norbert College students and employees only.