

THE WISCONSIN SURVEY – Spring 2011

Direction of State and Country and Approval Ratings

Survey Information:

Random Selection, Landline Telephone Survey
Number of Adult Wisconsin Resident Respondents: 400
Interview Period: 4/5/11 – 4/18/11
Margin of Error: +/- 5% at the 95% confidence level.

Contact:

Wendy Scattergood
Assistant Professor of Political Science, St. Norbert College Survey Center
DePere, WI 54115
(920) 403-3491
wendy.scattergood@snc.edu

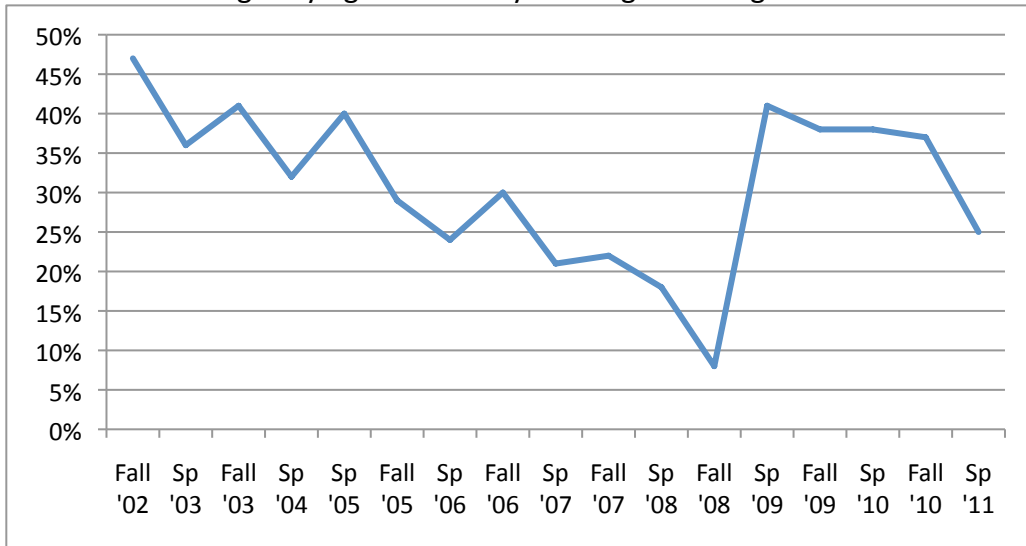
- *NOTE: Percentages may not add to 100% due to rounding.*

Generally speaking, would you say that things in the country are going in the right direction, or are they going in the wrong direction?

Right Direction..... 25%
Wrong Direction 70%
Not Sure..... 6%
Refused..... <1%

	Right Direction
Fall '02	47%
Sp '03	36%
Fall '03	41%
Sp '04	32%
Sp '05	40%
Fall '05	29%
Sp '06	24%
Fall '06	30%
Sp '07	21%
Fall '07	22%
Sp '08	18%
Fall '08	8%
Sp '09	41%
Fall '09	38%
Sp '10	38%
Fall '10	37%
Sp '11	25%

Percentage Saying The Country is Going in the Right Direction



Generally speaking, would you say that things in the state of Wisconsin are going in the right direction, or are they going in the wrong direction?

- Right Direction..... 38%
- Wrong Direction 54%
- Not Sure..... 9%
- Refused..... 0%

	Right	Wrong	Not Sure
Sp '03	52%	38%	9%
Fall '03	51%	43%	6%
Sp '04	55%	35%	10%
Sp '09	39%	55%	6%
Sp '11	38%	54%	9%

Now I'd like to ask you about some major political figures and your opinion on how well they are doing their job. For each of the following, please tell me whether you strongly approve, approve, disapprove, or strongly disapprove with the way the person is doing their job or whether you have not heard of them.

	Strongly Approve	Approve	Disapprove	Strongly Disapprove	Have Not Heard Of	Not Sure	Refused
a. Barack Obama	13%	39%	22%	23%	<1%	2%	<1%
b. Scott Walker	18%	28%	16%	32%	<1%	5%	0%
c. Ron Johnson	7%	29%	13%	9%	20%	23%	0%
d. Herb Kohl	7%	43%	22%	6%	10%	13%	1%

Approval Ratings only for those who had heard of the person and did not refuse (percentages after taking out those who had not heard of the person or did not answer the question)

	Strongly Approve	Approve	Disapprove	Strongly Disapprove	Not Sure
a. Barack Obama	14%	39%	22%	24%	2%
b. Scott Walker	18%	29%	16%	32%	5%
c. Ron Johnson	8%	35%	16%	12%	29%
d. Herb Kohl	7%	48%	24%	6%	13%

Approval Ratings for President Obama

Sp '09	60%
Fall '09	50%
Sp '10	44%
Fall '10	42%
Sp '11	52%

For the following groups, please tell me whether you have a favorable or unfavorable opinion of that group.

	Favorable	Unfavorable	Not Sure	Refused
a. Democrats in the Wisconsin State Legislature	46%	48%	6%	<1%
b. Republicans in the	45%	46%	9%	<1%

Wisconsin State Legislature				
-----------------------------	--	--	--	--