

RESPIRATORY VIRUS SURVEILLANCE REPORT

Week Ending January 20, 2018

Wisconsin Department of Health Services | Division of Public Health

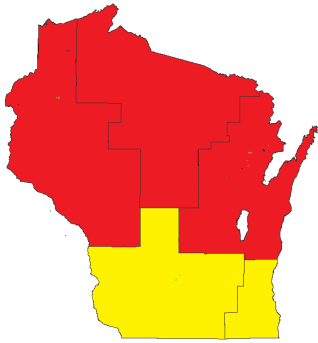
Bureau of Communicable Diseases | Communicable Diseases Epidemiology Section

<https://www.dhs.wisconsin.gov/dph/bcd.htm> | dhsdphbcd@dhs.wi.gov



INFLUENZA LIKE ILLNESS (ILI) ACTIVITY

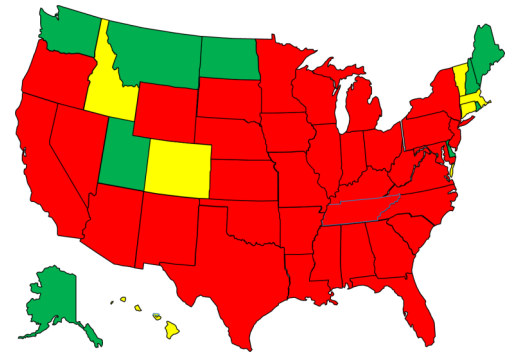
STATE OF WISCONSIN



REGION V OF US
(WI, MN, IL, MI, OH, IN)



UNITED STATES



● ILI: HIGH LEVELS ● ILI: MODERATE LEVELS ● ILI: BELOW BASELINE ● ILI: INSUFFICIENT DATA

AT-A-GLANCE:

- [Weekly Respiratory Report Description](#)
- **Predominant Virus of the Week:**
Influenza A/H3N2

CURRENT ALERTS:

- Influenza activity continues to increase statewide. 646 flu-associated hospitalizations were reported this week. RSV activity continues to be high statewide.

INFLUENZA-ASSOCIATED PEDIATRIC DEATHS REPORTED:

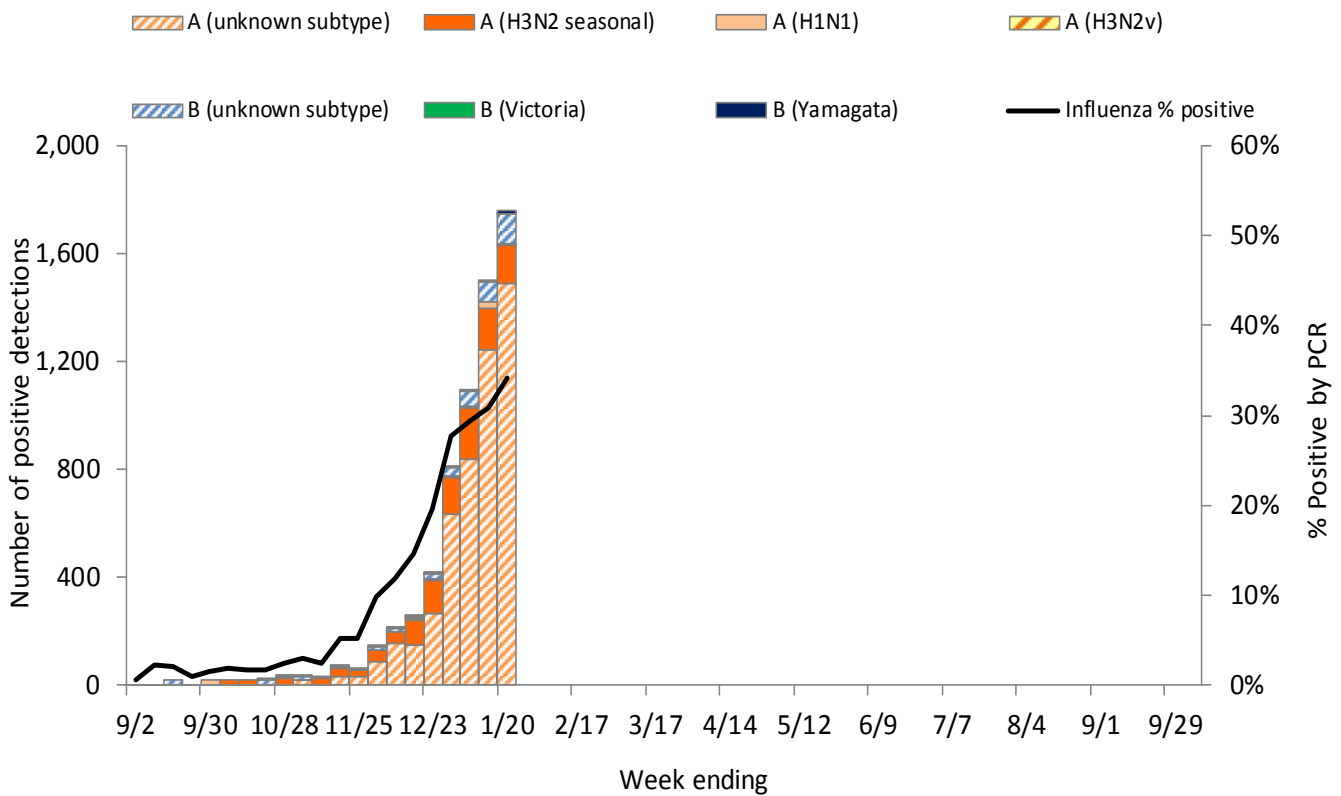
	<u>Week 3 (2018)</u>	<u>October 1, 2017 to present</u>
Wisconsin	0	0
Nationwide	7	37

For National US influenza surveillance statistics visit: <http://www.cdc.gov/flu/weekly/>



WISCONSIN LABORATORY SURVEILLANCE FOR RESPIRATORY VIRUSES BY PCR

Wisconsin positive influenza results and subtypes by PCR

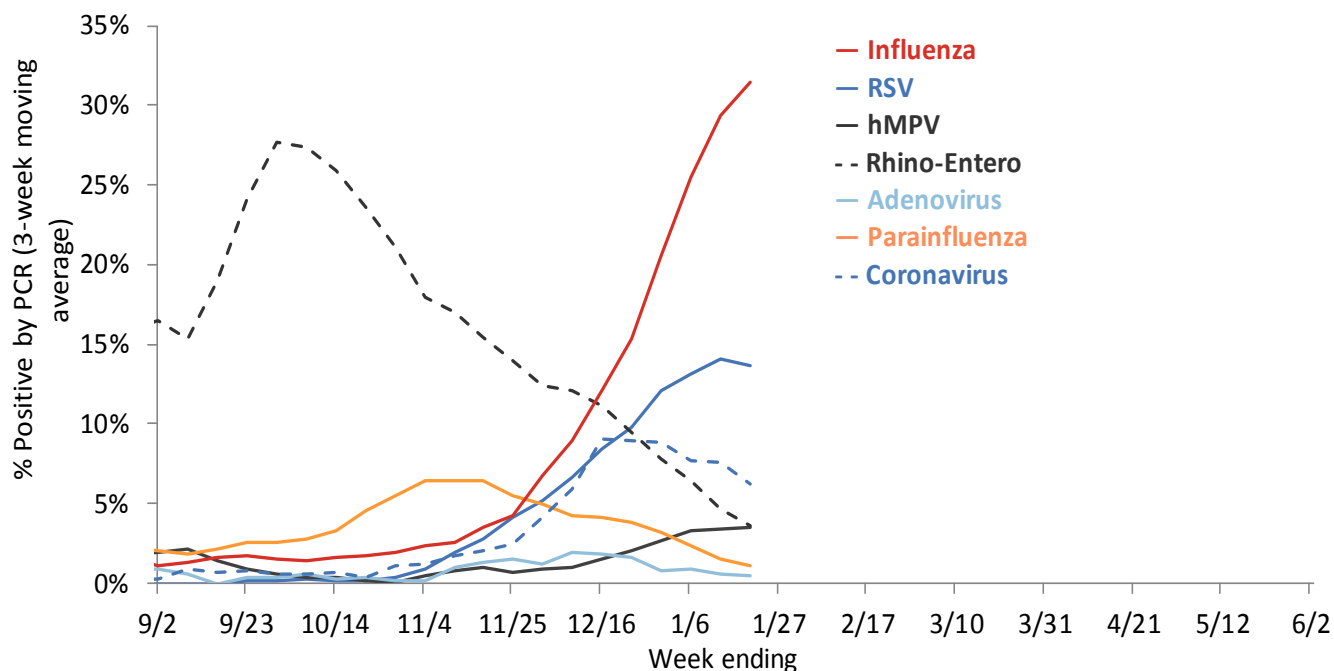


Cumulative number of positive influenza PCR tests by subtype September 3, 2017 to present

	Influenza A: 94%			Influenza B: 6%			Total
	A (2009 H1N1)	A (H3N2)	A (Unknown)	B (Victoria)	B (Yamagata)	B (Unknown)	
Total positive (n)	65	1057	4939	4	47	336	6448
% of total positive	1%	16%	77%	0%	1%	5%	100%

WISCONSIN LABORATORY SURVEILLANCE FOR RESPIRATORY VIRUSES BY PCR

Trends in respiratory virus activity by PCR



Week ending on January 20, 2018

Respiratory virus	Tested	Positive (n)	Positive (%)	Influenza A			Influenza B		
				H3N2	2009 H1N1	Unknown	Victoria	Yamagata	Unknown
Influenza	5125	1755	34.2%	139	10	1487	1	9	109

Respiratory virus	Tested	Positive (n)	Positive (%)	Parainfluenza 1	Parainfluenza 2	Parainfluenza 3	Parainfluenza 4
Parainfluenza	1088	13	1.2%	9	1	3	0

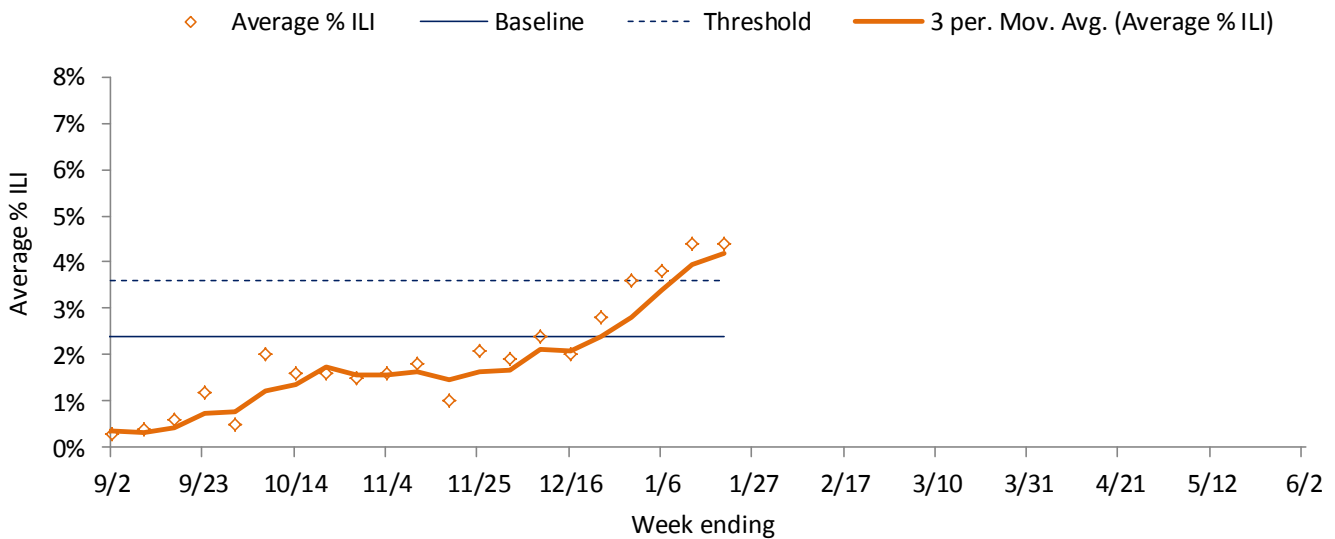
Respiratory virus	Tested	Positive (n)	Positive (%)	CoV 229E	CoV OC43	CoV NL63	CoV HKU1
Coronavirus (CoV)	519	22	4.2%	0	8	8	6

Respiratory virus	Tested	Positive (n)	Positive (%)
RSV	1907	252	13.2%
Human metapneumovirus	1111	40	3.6%
Rhino-enterovirus	1047	36	3.4%
Adenovirus	519	2	0.4%

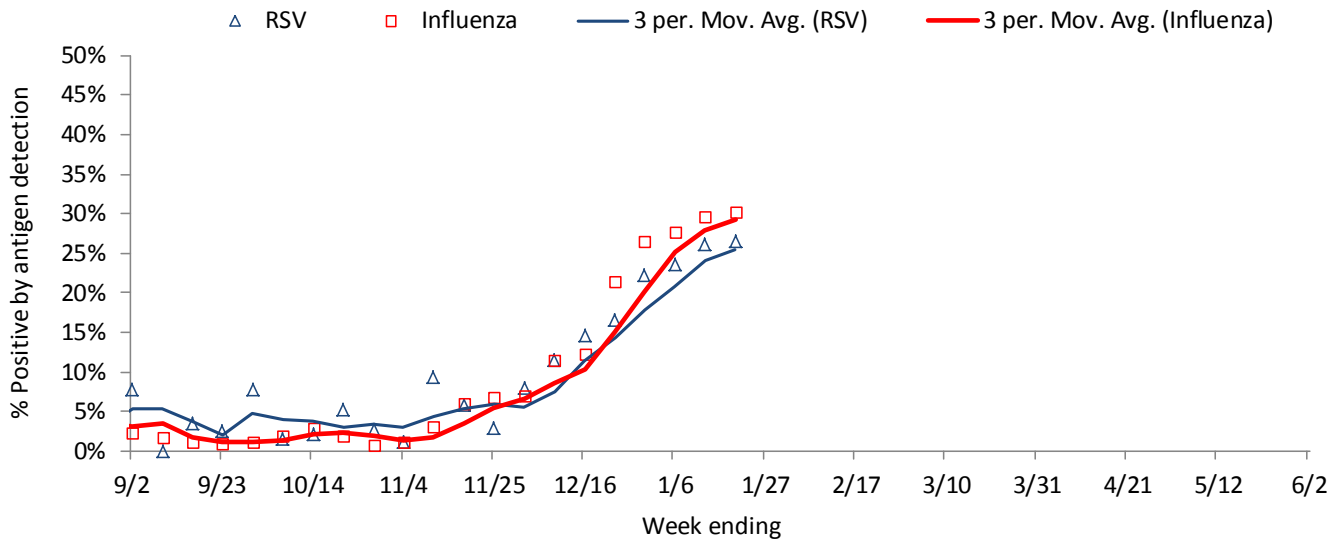
WISCONSIN STATE SUMMARY

Influenza rapid antigen tests					RSV rapid antigen tests			Influenza-like illness (ILI)		
Tested	Positive (n)			% Positive	Tested	Positive (n)	% Positive	ILI %	Baseline	Threshold
	Influenza A	Influenza B	Total							
3872	1088	85	1173	30.3%	305	81	26.6%	4.4%	2.4%	3.6%

ILI activity trend analysis

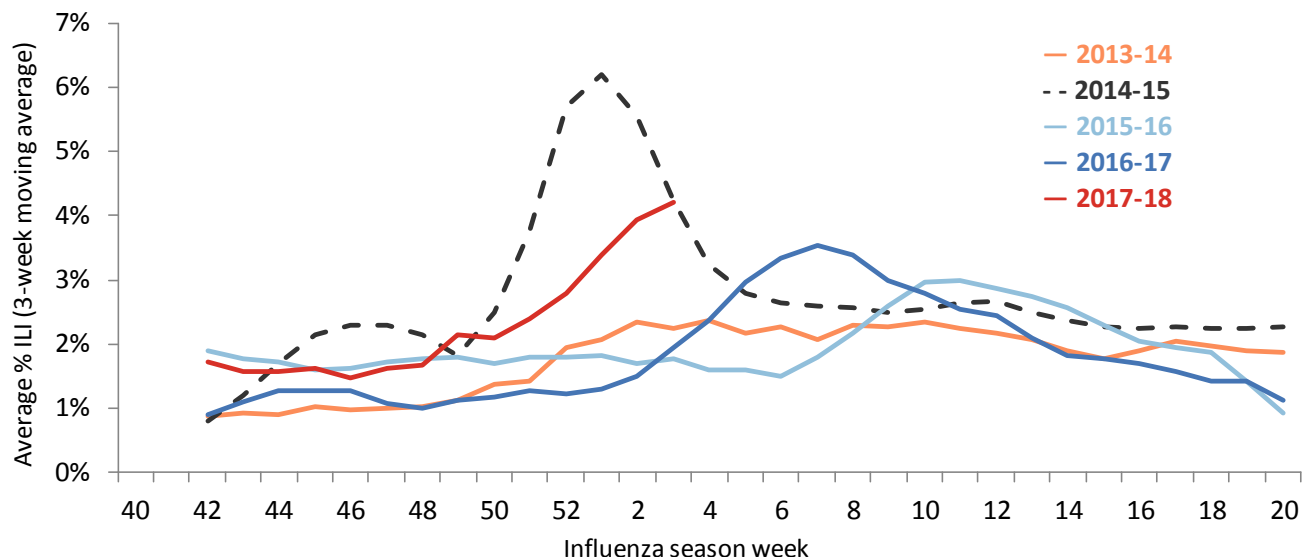


Influenza and RSV trend analysis



WISCONSIN STATE SUMMARY

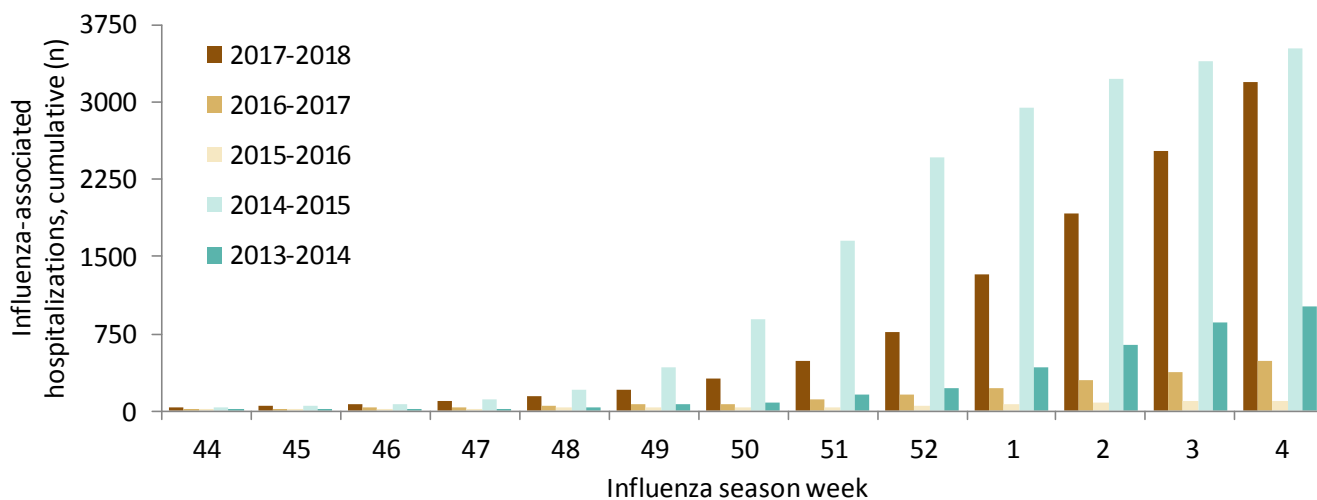
ILI activity trend analysis by influenza season, Wisconsin



Influenza-associated hospitalizations, Wisconsin Electronic Disease Surveillance System September 1, 2017 to present

Age group (years)	Total reported (n)	Influenza subtype					Admitted to ICU	Required mechanical ventilation	Pregnant	Postpartum (≤6 weeks)
		A (2009 H1N1)	A (H3N2)	A (Unknown)	B	Not reported				
<1	28	1	3	22	0	2	5	1	0	0
1-4	44	1	1	33	4	5	6	3	0	0
5-17	60	1	4	32	2	21	10	1	0	0
18-49	327	7	35	230	17	38	49	11	21	4
50-64	599	24	84	419	41	31	91	32	0	0
65+	2138	21	280	1641	95	101	235	61	0	0
Total	3196	55	407	2377	159	198	396	109	21	4

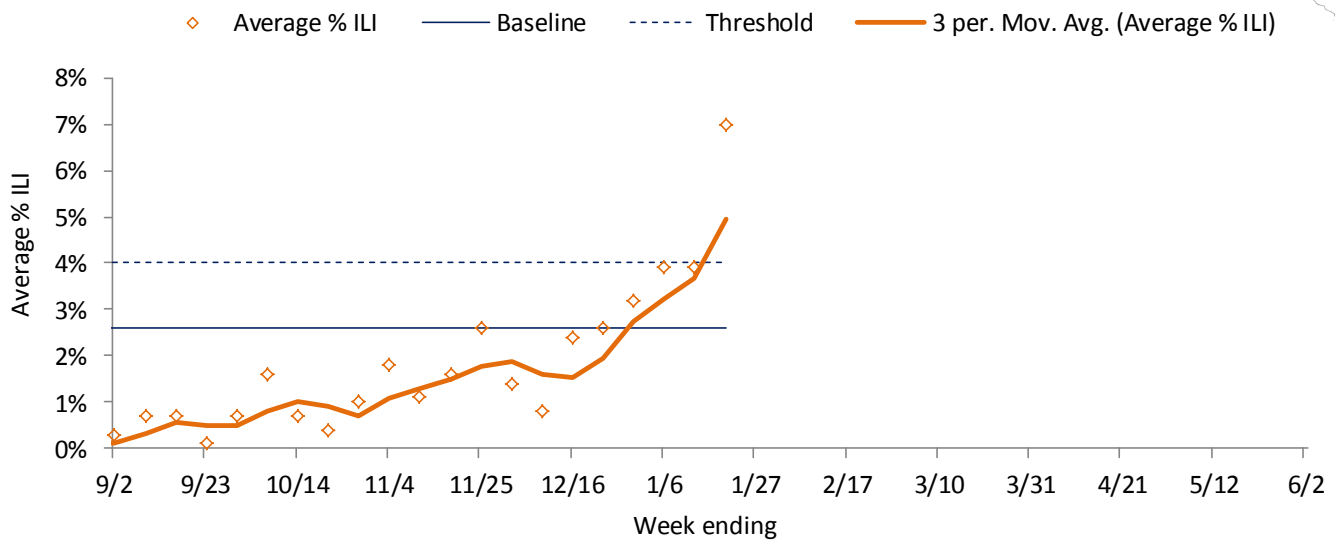
Reported cumulative influenza-associated hospitalizations by influenza season, Wisconsin



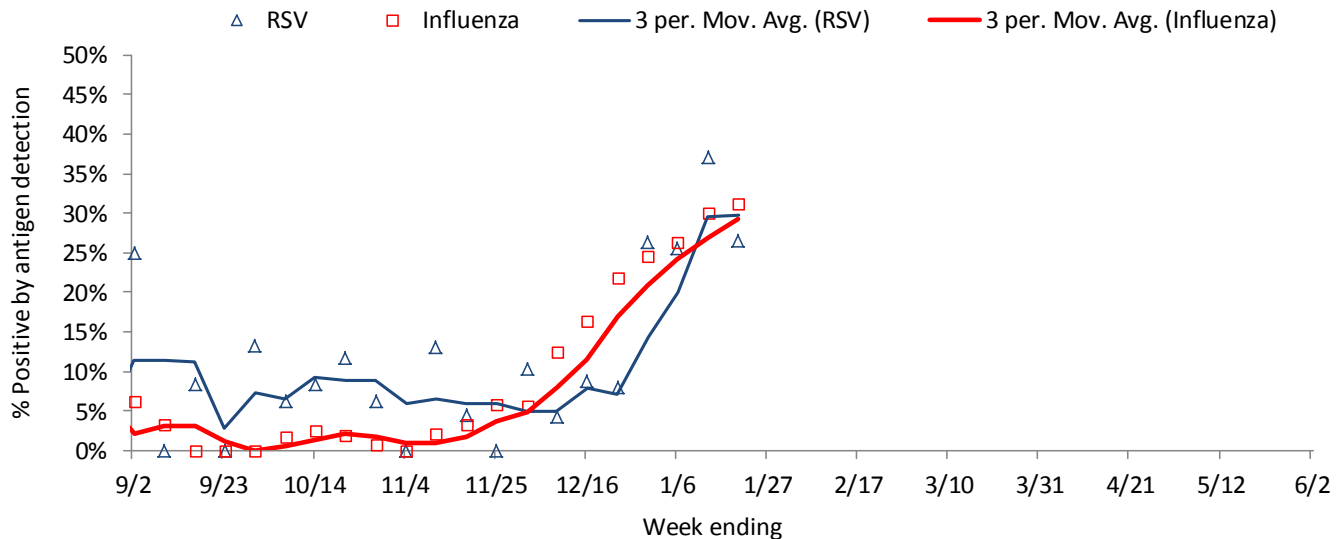
NORTHEASTERN REGION

Influenza rapid antigen tests					RSV rapid antigen tests			Influenza-like illness (ILI)		
Tested	Positive (n)			% Positive	Tested	Positive (n)	% Positive	ILI %	Baseline	Threshold
	Influenza A	Influenza B	Total							
1019	307	11	318	31.2%	83	22	26.5%	7.0%	2.6%	4.0%

ILI activity trend analysis



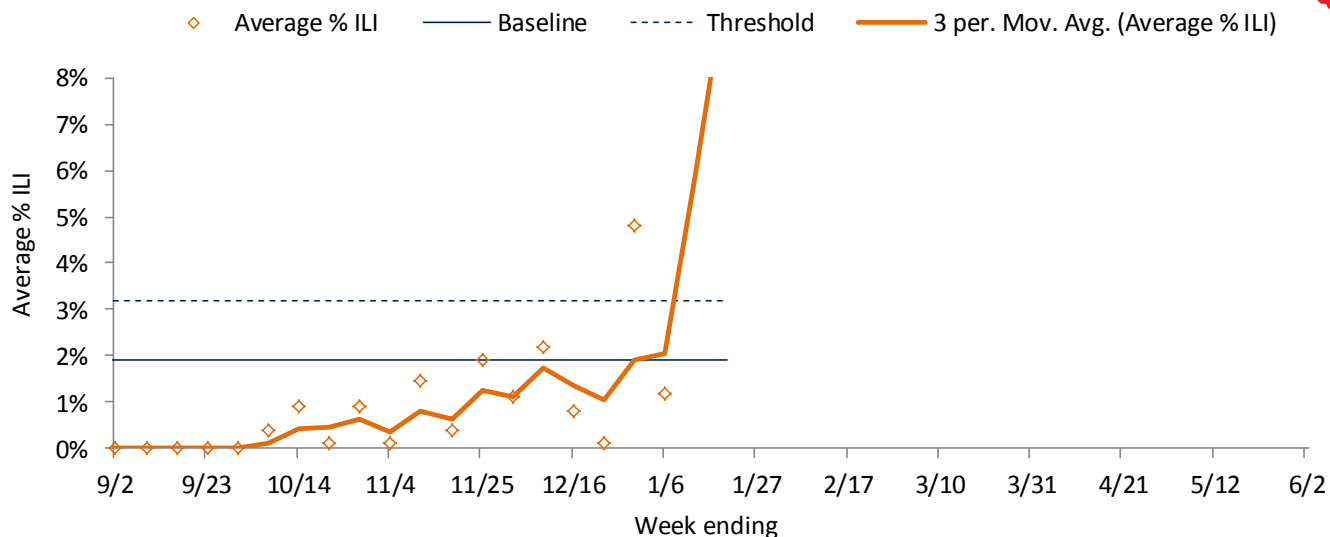
Influenza and RSV trend analysis



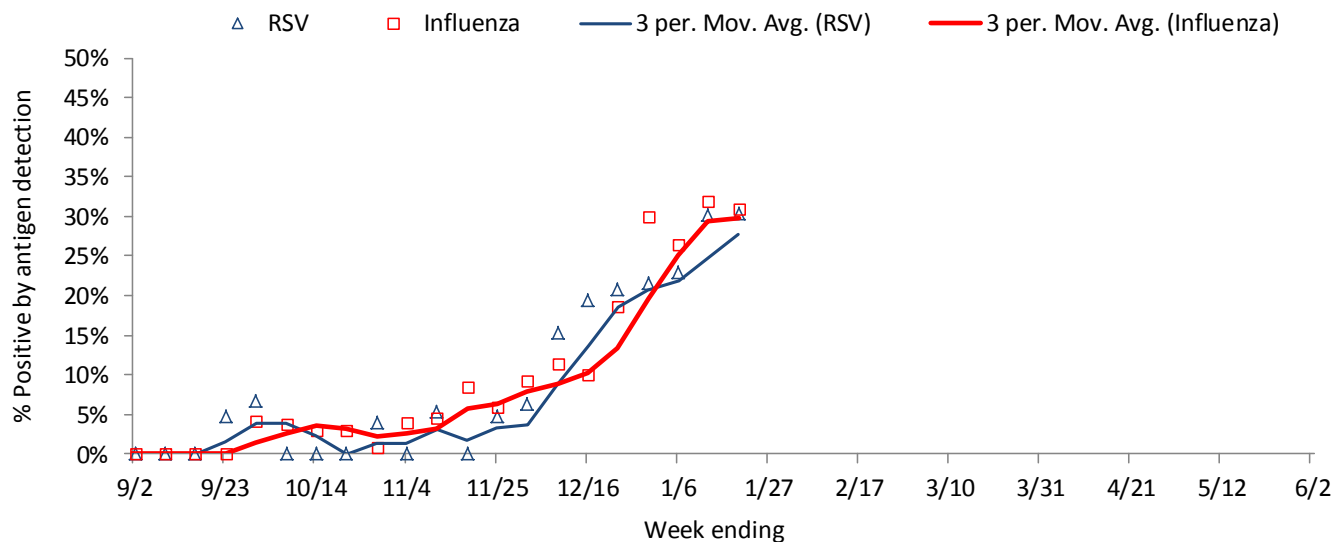
NORTHWESTERN REGION

Influenza rapid antigen tests					RSV rapid antigen tests			Influenza-like illness (ILI)		
Tested	Positive (n)			% Positive	Tested	Positive (n)	% Positive	ILI %	Baseline	Threshold
	Influenza A	Influenza B	Total							
996	287	21	308	30.9%	122	37	30.3%	17.0%	1.9%	3.2%

ILI activity trend analysis



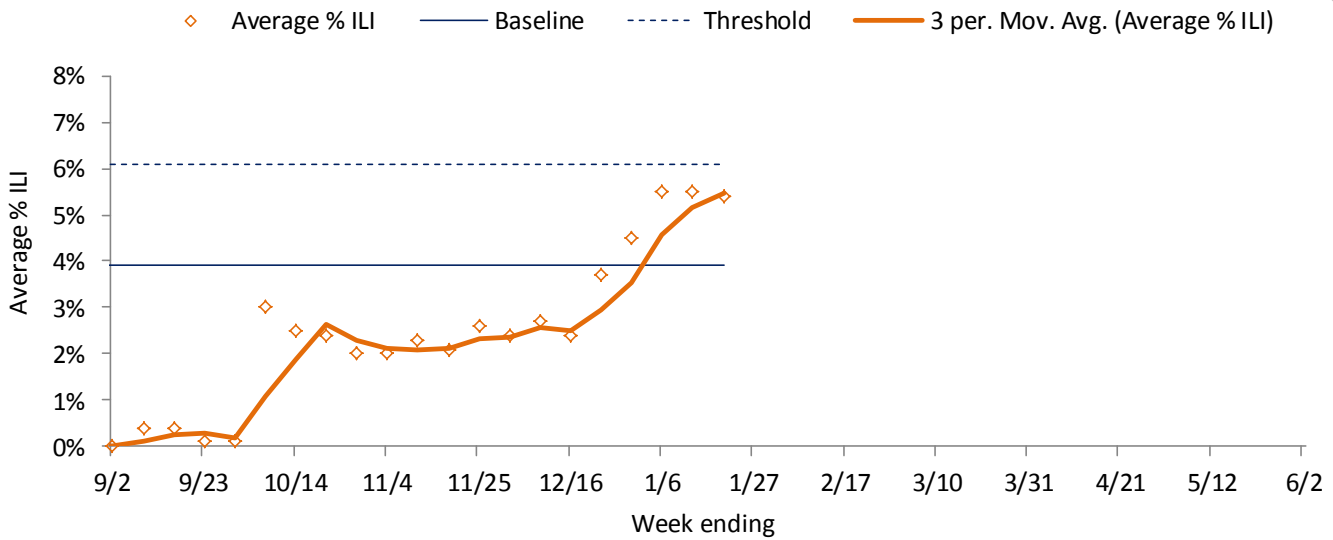
Influenza and RSV trend analysis



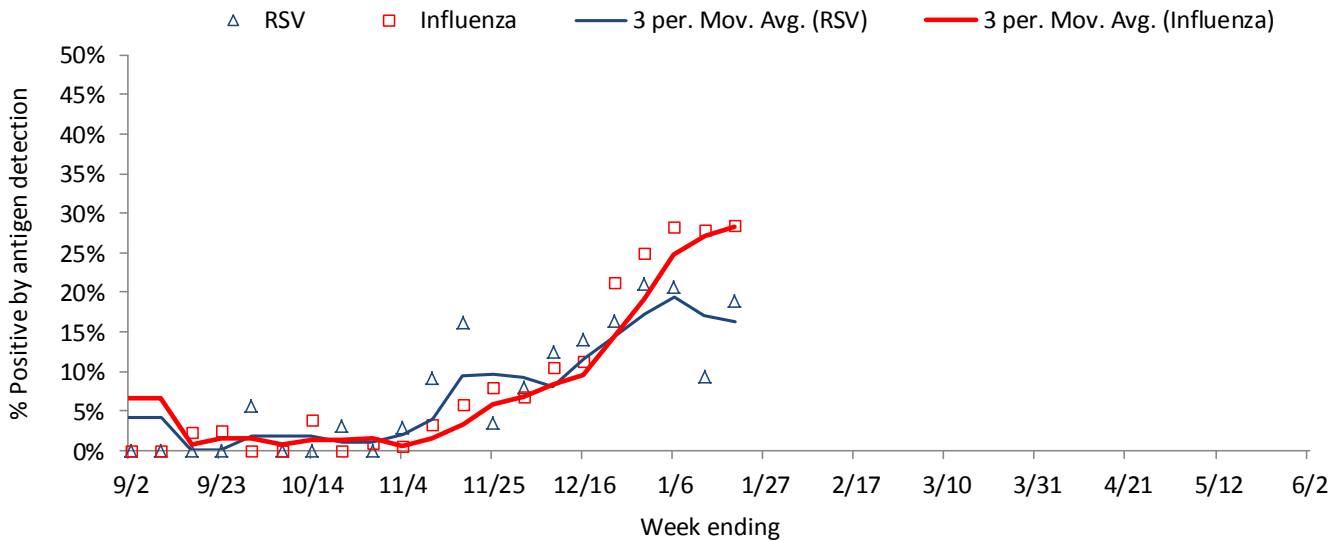
SOUTHEASTERN REGION

Influenza rapid antigen tests					RSV rapid antigen tests			Influenza-like illness (ILI)		
Tested	Positive (n)			% Positive	Tested	Positive (n)	% Positive	ILI %	Baseline	Threshold
	Influenza A	Influenza B	Total							
1703	436	48	484	28.4%	74	14	18.9%	5.4%	3.9%	6.1%

ILI activity trend analysis



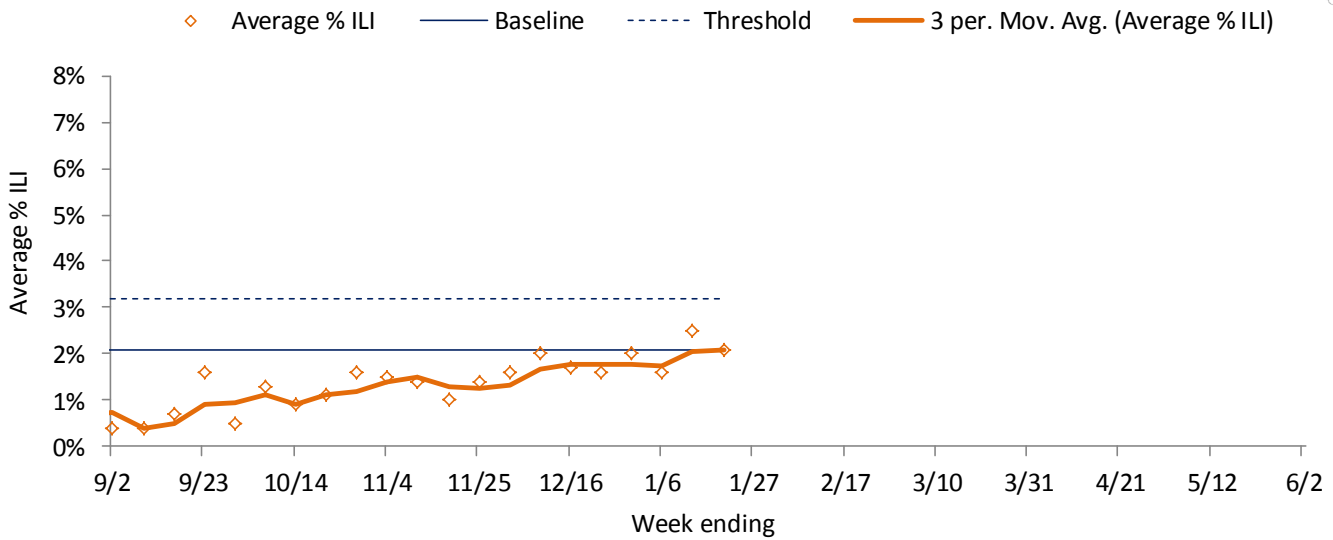
Influenza and RSV trend analysis



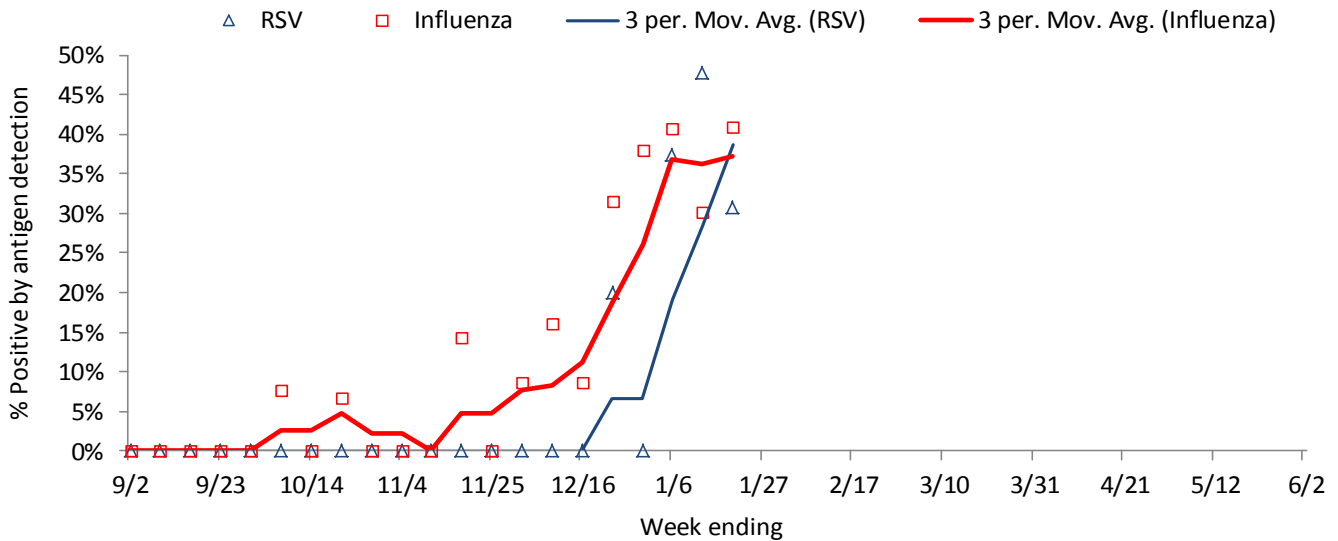
SOUTHERN REGION

Influenza rapid antigen tests					RSV rapid antigen tests			Influenza-like illness (ILI)		
Tested	Positive (n)			% Positive	Tested	Positive (n)	% Positive	ILI %	Baseline	Threshold
	Influenza A	Influenza B	Total							
154	58	5	63	40.9%	26	8	30.8%	2.1%	2.1%	3.2%

ILI activity trend analysis

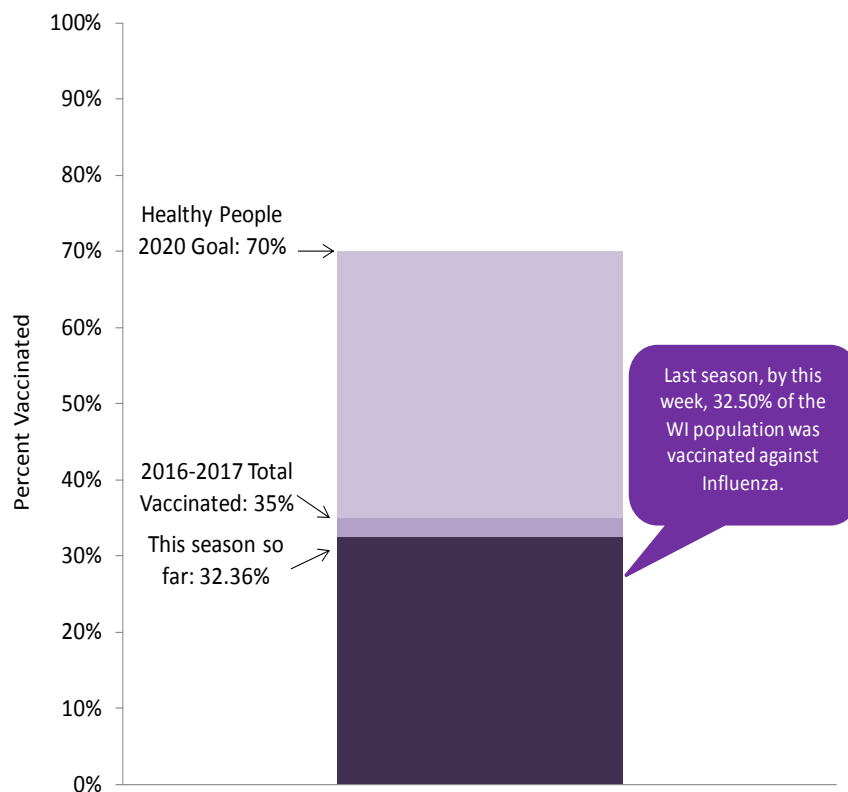


Influenza and RSV trend analysis



SEASONAL INFLUENZA VACCINATION

Cumulative percentage of Wisconsin residents who received 1 or more doses of influenza vaccine, 2017-2018 influenza season



Data source: All influenza vaccination rates presented were calculated using data from the Wisconsin Immunization Registry (numerator) and Wisconsin population estimates (denominator).

Influenza vaccine composition 2017-2018:

The **trivalent** vaccines for use in the 2017-2018 influenza season contain the following:

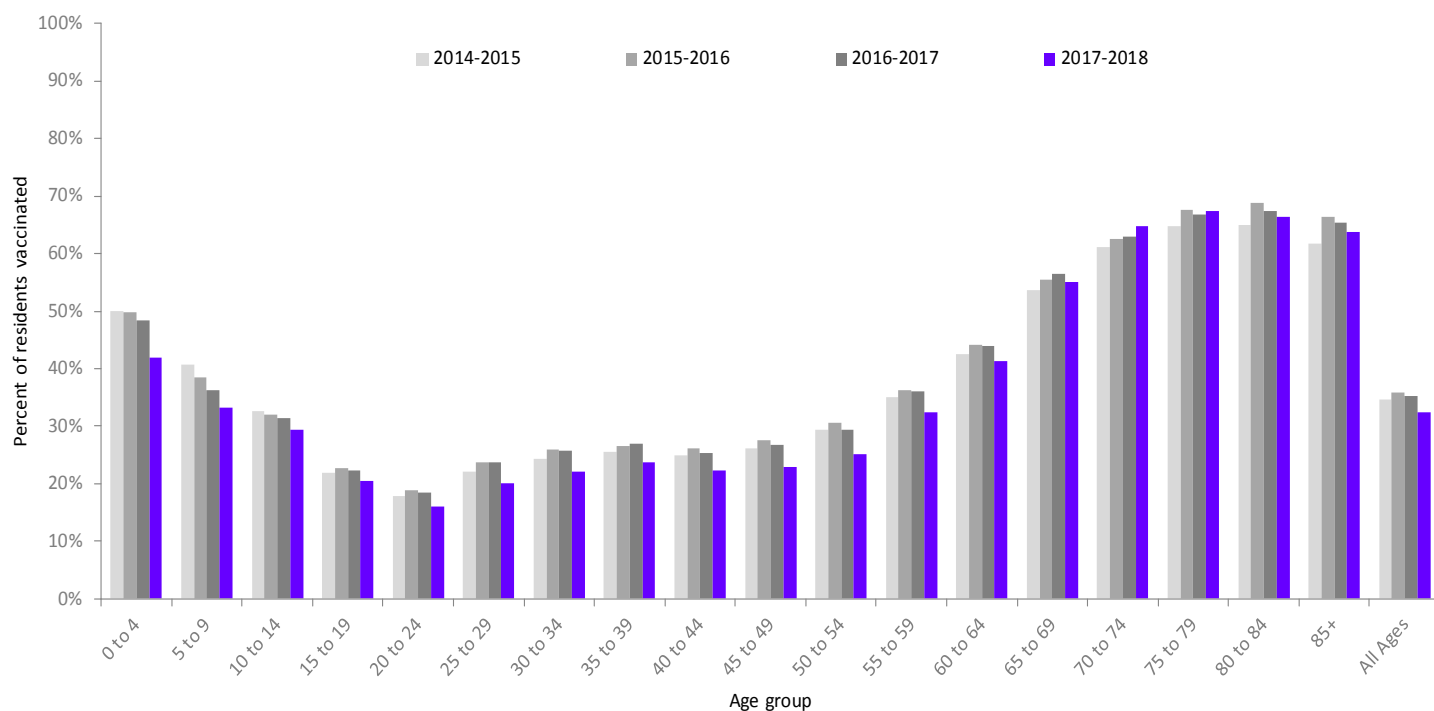
- A/Michigan/45/2015 (H1N1)pdm09-like virus
- A/Hong Kong/4801/2014 (H3N2)-like virus
- B/Brisbane/60/2008-like virus (B/Victoria lineage)

It is recommended that **quadrivalent** vaccines containing two influenza B viruses contain the above three viruses and:

- B/Phuket/3073/2013-like virus (B/Yamagata lineage)

SEASONAL INFLUENZA VACCINATION

Percentage of Wisconsin residents who received one or more doses of influenza vaccine, by age group and influenza season



Percentage of Wisconsin residents who received one or more doses of influenza vaccine, by race and ethnicity and region, 2017-2018 influenza season

